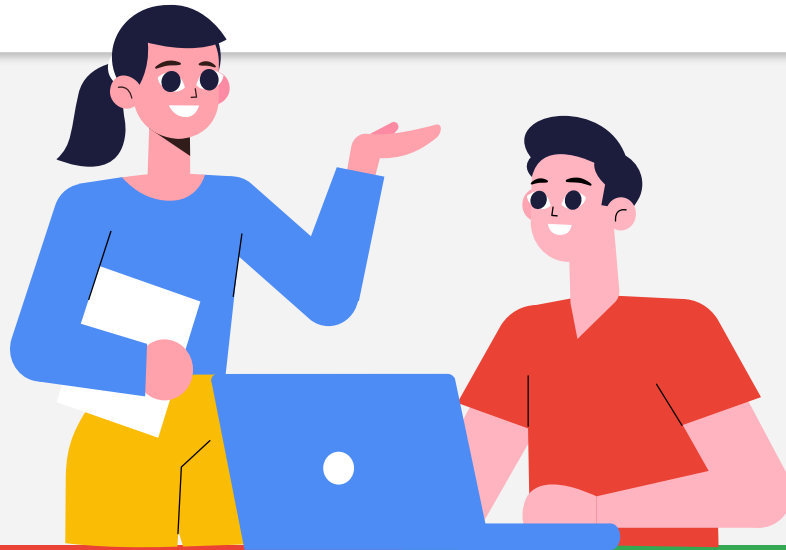


# McKinley Return

## 3 - 5



🔍 **March 19, 2020**



Superintendent McDonald, with guidance from the Pasadena Health Department, issued a Stay at Home Directive for all PUSD students and employees.



# Overview



1

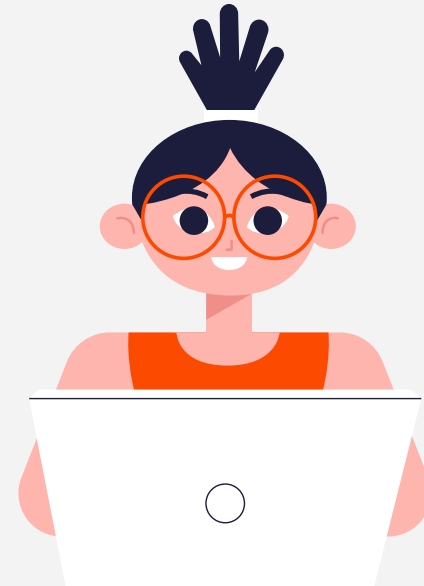
## Tonight's Takeaways:

- **LEARNS Program**
- **Day in the Life**
- **Campus Entry/Exits**
- **Classroom Configurations**
- **Schedules**
- **Health and Safety Protocols**

2

3

4



# LEARNs



**McKinley**  
**LEARNs**  
After School Program

Tuesdays - Fridays  
12:55 - 5:00 PM

3rd-5th  
Grade Start  
Date:  
**TUESDAY, APRIL  
20TH, 2021**

Applications are open **but  
spaces are limited.** In order  
to be apart of LEARNs, School  
Survey **MUST** be completed for  
In-Person Return.

**Apply  
Today!**

Applications are found at [www.pusd.us/learns](http://www.pusd.us/learns)  
Look for McKinley's Application Link

<https://www.pusd.us/learns>

M

T

X

T

F



# Overview



1

## • Return to School KLRN Pasadena Unified

- Self Assessment

- Mask Requirements

- Entry Screening



- Desks 6 feet apart

- Ventilation

- Grab n Go Lunch

2

3

4

# McKinley School



M

T

X

T

F

# School Days/Times



1

## DAYS:

**Mondays:** Distance  
learning for all  
students

**Tuesdays to Fridays:**  
Hybrid Simultaneous

## START TIME:

**8:00AM**

## END TIME/PICK UP FOR IN-PERSON STUDENTS:

**12:55PM**

2

3

4

# Campus Entry/Exits



1

## 3rd Grade

Totals: ~~33~~

Classes: 4

Admin: Mr. Green

Aide: Mr. Lynch

Entrance: El Molino

Exit: Oak Knoll: -

Grab n Go lunch

(C-Building)

Start: 8:00a

End: 12:55p

## 4th Grade

Totals: 22

Classes: 2

Admin: Dr. Stewart

Aide: Mr. Brooks

Entrance: South side  
Library

Exit: South side of  
Library

Grab n Go

Start: 8:00a

End: 12:55p

## 5th Grade

Totals: 41

Classes: 3

Admin: Dr. Stewart

Aide: Mr. Brooks

Entrance: South side  
Library

Exit: South side of  
Library

Grab n Go

Start: 8:00a

End: 12:55p

2

3

4





# Campus Protocols



1

## All Grades tk-5 students:

- Will be screened with a temperature check, parents MUST wait for clearance.
- Parents are NOT allowed on campus, unless emergency, or confirmed appointment
- All students MUST wear a mask at all times

2

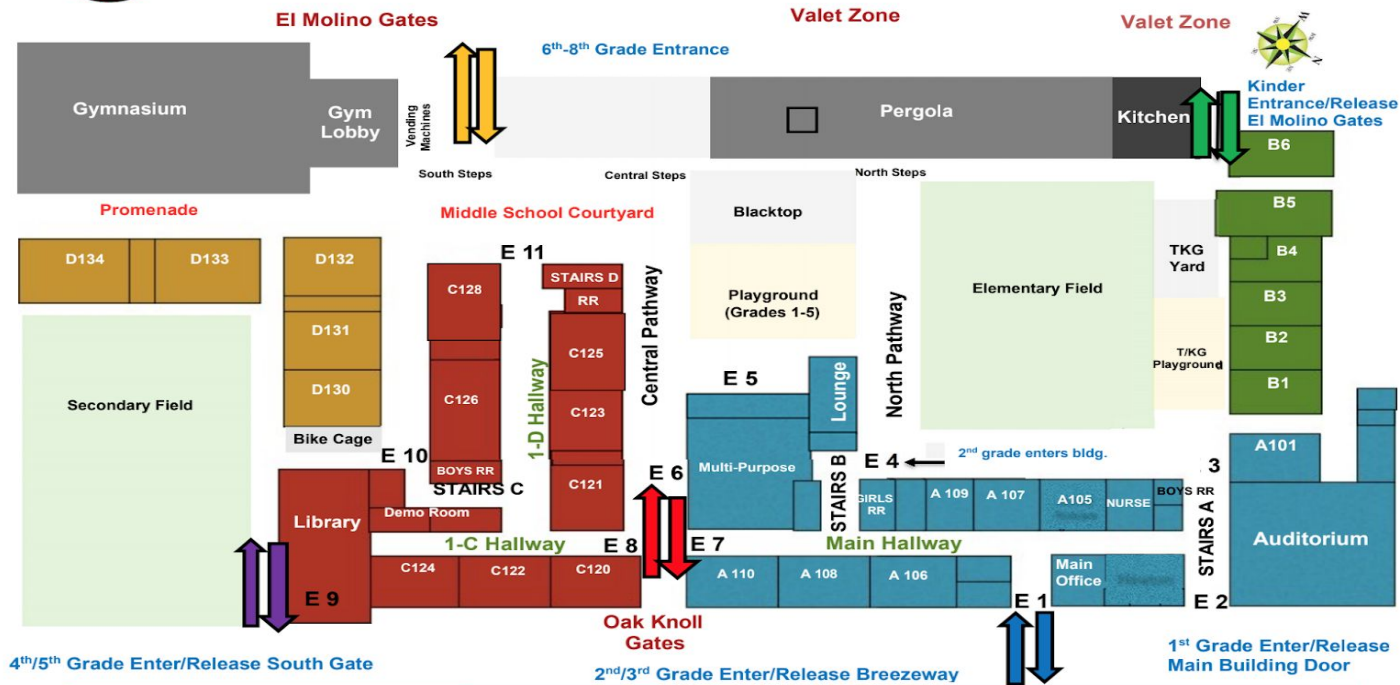
3

4

# McKinley Entrance/Exits



## McKinley School Campus Map



Entrance/Release:  
 Kinder: El Molino gates  
 1<sup>st</sup> Grade: Main Building Entrance  
 2<sup>nd</sup>/3<sup>rd</sup> Grade: Breezeway  
 3<sup>rd</sup>/4<sup>th</sup> Grade: South Gate  
 6<sup>th</sup>-8<sup>th</sup> Grade: El Molino Gym Gates

CRH072716



# Campus Entry/Exits



1

## Tk/K

Totals: 30

Classes: 4

Admin: Mrs. Franco  
Aide: Mr. Carter

Entrance: El Molino  
Exit: Oak Knoll:  
Marquee - Grab n  
Go lunch

Start: 8:00a  
End: 12:55p

## 1st Grade

Totals: 40

Classes: 3

Admin: Dr. Bailey  
Aide: Ms. Martinez

Entrance: Breezeway  
Exit: Oak Knoll: Main  
Door - Grab n Go lunch  
in front of A Building

Start: 8:00a  
End: 12:55p

## 2nd Grade

Totals: 27

Classes: 3

Admin: Mr. Green  
Aide: Mr. Lynch

Entrance: Breezeway  
Exit: Oak Knoll:  
Breezeway - Grab n Go  
lunch in front of C  
Building

Start: 8:00a  
End: 12:55p

2

3

4



# Classroom Configurations



1

- **1. Class Size/Determining the Need for Cohorts**

In this scenario, **less than 14 students have elected to return to in-person learning per classroom.** Because of this, students are able to attend in-person from Tuesday to Friday.

2

- **2. Class Room Cohorts**

If there are **more than 14 students per class**, teachers will create a cohort.

3

- **3. Who Creates the Cohorts?**

Teachers have been created cohorts to ensure equity and fidelity across all educational domains.

4

## Scenario 1: NO Cohorts

In this scenario, **less than 14 students have elected to return to in-person learning per classroom**. Because of this, students are able to attend in-person from Tuesday to Friday.





Synchronous time will **remain the same at 240 minutes for Tuesday to Friday**.

Monday	Tuesday	Wednesday	Thursday	Friday
 				












## Scenario 2: Cohorts A and B



	Cohort A	Cohort B
At School		
At Home		

In this hybrid model, schools will operate in a reduce capacity( 25% - 50%) with safety and distance learning at home to keep class sizes smaller. Thorough cleaning of classrooms will take place between cohorts of students.

	Monday	Tuesday	Wednesday	Thursday	Friday
A					
B					



## On Campus Daily Schedule

<b>Teacher Start Time (7:40am)</b>					10:35-11:05am (30 min)	<b>Specials (synchronous)</b> PE, Arts, DLIP, etc.			
<b>Start of School (8:00am)</b>									
	<b>Tuesday – Friday</b>				11:05-11:15am (10 min)	<b>Get ready to learn!</b> Organize your supplies.			
8:00-8:30am (30 min)	<b>Daily Class Meeting (synchronous)</b> Purpose, Community Building, Social-Emotional connections, Expectations, Daily News				11:15am-12:00pm (45 min)	<b>Synchronous Learning Time</b>			
						Social Studies /Writing	Science	Social Studies /Writing	Science
8:30-8:40am (10 min)	<b>Get ready to learn!</b> Organize your supplies.				12:00-12:10pm (10 min)	<b>Take a break!</b> Get up and stretch, use the restroom, and grab a snack.			
8:40-9:25am (45 min)	<b>Synchronous Learning Time</b>				12:10-12:55pm (45 min)	<b>Personalized Learning Time</b>			
	ELA/Target LA	Math	ELA/Target LA	Math					
9:25-9:35am (10 min)	<b>Take a break!</b> Get up and stretch, use the restroom, and grab a snack.				<b>Student Dismissal (12:55pm)</b>				
					<b>Teacher Lunch (30 min)</b>				
9:35-10:20am (45 min)	<b>Personalized Learning Time</b>				<b>Office Hours / Building Online Content (60 min, 1:25 – 2:25pm)</b>				
10:20-10:35am (15 min)	<b>Take a break!</b> Get up and stretch, use the restroom, and grab a snack.				<b>Teacher Dismissal (2:45pm)</b>				

Grab & Go Lunch/Breakfast Provided at Exit Points



## 3rd Grade Handwashing Schedule

Teacher	Grade Level	Administrator	Aide	1st Hand Washing Break	2nd Hand Washing Break	3rd Hand Washing Break
Emralino	3	Green		Sanitize/9:00am	11:00am	12:00pm
Goethel	3	Green		Sanitize/9:00am	11:00am	12:00pm
Morrison	3	Green		Sanitize/9:00am	11:00am	12:00pm
Tully	3	Green		Sanitize/9:00am	11:00am	12:00pm





## 4th & 5th Grade Handwashing Schedule

Teacher	Grade Level	Administrator	Aide	1st Hand Washing Break	2nd Hand Washing Break	3rd Hand Washing Break
Beale	4	Stewart	Brooks	9:00am	Sanitize/10:00am	Sanitize/12:00pm
Lira	4	Stewart	Brooks	9:00am	Sanitize/10:00am	Sanitize/12:00pm
Gilbreath	5	Stewart	Brooks	Sanitize/9:00am	10:00am	12:00pm
FazerLake	5	Stewart	Brooks	Sanitize/9:00am	10:00am	12:00pm
Hancock	5	Stewart	Brooks	Sanitize/9:00am	10:00am	12:00pm



**Q Hand washing sched**





# Hand Washing Schedule



M

T

X

T

F

Teacher	Grade Level	Administrator	Aide	1st Hand Washing Break	2nd Hand Washing Break	3rd Hand Washing Break
Strehl	Tk	Franco	Carter	8:30am	10:20am	12:00pm
Bell	k	Franco	Carter	8:30am	10:20am	12:00pm
Bergman	k	Franco	Carter	8:30am	10:20am	12:00pm
Choi	k	Franco	Carter	8:30am	10:20am	12:00pm
Robles	1	Bailey	Martinez	8:30am	10:20am	12:00pm
Macias	1	Bailey	Martinez	8:30am	10:20am	12:00pm
Wood	1	Bailey	Martinez	8:30am	10:20am	12:00pm
Miller	2	Green	Lynch	8:30am	11:05a	12:00pm
Brink	2	Green	Lynch	8:30am	11:05a	12:00pm
Sandoval	2	Green	Lynch	8:30am	11:05a	12:00pm



# Hand Washing Schedule



Teacher	Grade Level	Administrator	Aide	1st Hand Washing Break	2nd Hand Washing Break	3rd Hand Washing Break
Strehl	Tk	Franco	Carter	8:30am	10:20am	12:00pm
Bell	k	Franco	Carter	8:30am	10:20am	12:00pm
Bergman	k	Franco	Carter	8:30am	10:20am	12:00pm
Choi	k	Franco	Carter	8:30am	10:20am	12:00pm
Robles	1	Bailey	Martinez	8:30am	10:20am	12:00pm
Macias	1	Bailey	Martinez	8:30am	10:20am	12:00pm
Wood	1	Bailey	Martinez	8:30am	10:20am	12:00pm
Miller	2	Green	Lynch	8:30am	11:05a	12:00pm
Brink	2	Green	Lynch	8:30am	11:05a	12:00pm
Sandoval	2	Green	Lynch	8:30am	11:05a	12:00pm

M

T

X

T

F

# Classroom safety



1

All 3 -5th grade classes have the following:

- Air Purifiers
- Desk 6ft apart
- Plexiglass for Teacher's Desk
- Wipes/Hand Sanitizer/Gloves
- McKinley Masks & Face Shields
- Weekly Deep Cleaning (fogging)
- Scheduled Hand Washes/Sanitize

2

3

4



# Classes



1

All ~~Tk~~ 2 classes have the following:

- Air Purifiers
- Desk 6ft apart
- Plexiglass for Teacher's Desk
- Wipes/Hand Sanitizer/Gloves
- McKinley Masks & Face Shields
- Weekly Deep Cleaning (fogging)
- Scheduled Hand Washes

2



3

4

# Schedules



M

T

X

T

F

## Classroom Rosters

All tk-2 teachers have received their classroom responses from PUSD survey.



**Responses were recorded from  
the PUSD Parent Survey**

**Responses were shared with tk- 2  
Teachers to create classroom  
cohorts**

## Health Screening Protocols for Students and Staff

Before leaving home and entering school, ask yourself or your child these questions:

- Do I have a fever?
- Do I have a cough?
- Am I experiencing shortness of breath or difficulty breathing?
- Am I experiencing any other symptoms?
- Have I been in contact with someone who has tested positive for COVID-19 in the last 10 days?
- In the last two weeks, have I been in close contact with someone who has COVID-19?

If the **employee** responds “yes” to any of these questions, the employee must stay home and must contact direct supervisor, Human Resources, and recommended to contact doctor.

If a **student** responds “yes” to any of these questions, the student will be sent home or to the isolation area to wait for their parent or guardian.



### Isolation Policies

Any **employee** showing symptoms consistent with COVID-19 *while at work* needs to:

1. Notify direct supervisor
2. Go home
3. Recommended to notify doctor and request to get tested.

Any **student** showing symptoms consistent with COVID-19 *while at school* needs to be:

1. Guided to the isolation area with trained staff.
2. Picked up by parent or guardian.

## Quarantine Policies

**“Close Contact”** - being within 6 ft or more than 15 minutes over a 24 hour period, even if wearing a mask, or had unprotected direct contact with body fluids or secretions (i.e. sneezed or coughed upon).

Any **employee or student** who has been in **close contact** with someone diagnosed with or suspected to have COVID-19 is expected to:

1. Home quarantine (10 days)
2. Notify HR and direct supervisor (employee)
3. Notify doctor (recommendation)
4. Get tested (recommendation)

**“Home quarantine”** - method of slowing its spread through staying at home and away from other people.

# Technology



## What students bring each day:

- Students attending in-person will bring Chromebooks each day
  - If a student forgets their device, each school site will only have 1 cart of loaner devices.
- Students attending online will continue to use their devices as usual

# What about Lunch?

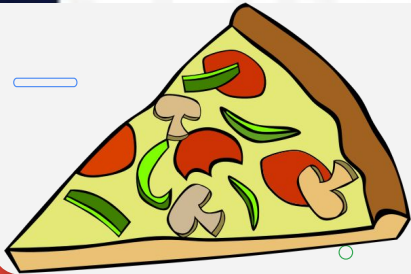


M

## School Meals for Students & Staff

### Students

- “Grab & Go” Meals at student exits
  - Students receive lunch and breakfast for the next morning
  - Breakfast is to be eaten at home prior to coming to school
- Drive-thru “Grab & Go” Meals also provided for students who remain in remote learning
- Snacks and Supper. Weekend meals.





**Everyone must wear a face mask**

**Everyone must sign in/out**

- Limited number of students
- Site Staff only
- Entrance/exit protocols
- Visitors - essential workers only
- Parents - remote as much as possible or by appointment





Questions?



<https://tinyurl.com/mckinleyreopening2021>